

User Manual Of Parking Guidance System

Part.1 Software Set Up

一： Software Installation

232 serial line driver	2021/7/30 9:53	文件夹	
Main control board serial port to TCP	2018/6/25 14:13	文件夹	
Remote software	2018/1/2 14:52	文件夹	
USB485 converter driver	2021/7/30 9:53	文件夹	
error	2018/1/15 12:56	文本文档	1 KB
Installation Notes	2021/7/30 9:56	文本文档	1 KB
jre7	2015/6/24 18:32	应用程序	28,818 KB
MYSQL_Setup_V5.0	2018/1/2 16:37	WinRAR ZIP 压缩...	15,547 KB
output	2018/1/15 12:56	文本文档	2 KB
ParkingGuidanceSystem_V1.24_en	2018/7/31 19:01	应用程序	76,234 KB
PGSTool_en	2018/4/4 13:44	应用程序	7,961 KB

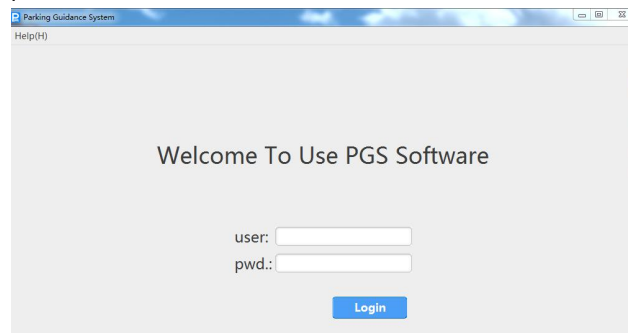
1.How to Install the software

Example: 1、 Click jre7.exe to install jre firstly

2、 Then Click MYSQL_Setup_V5.1.exe to install mysql

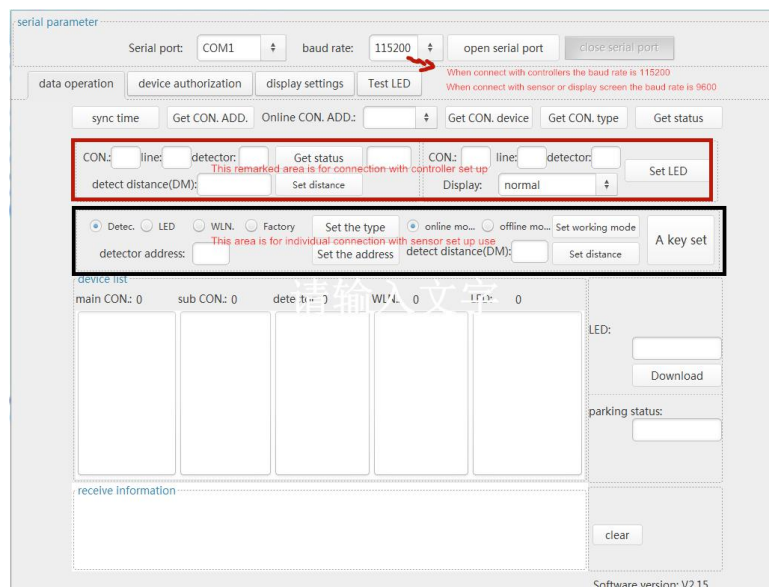
3、 Clcik ParkingGuidanceSystem_V1.24_en.exe to install the main program

After finish all the 3 steps installation then click the installed software and the default user is admin with password is 123456

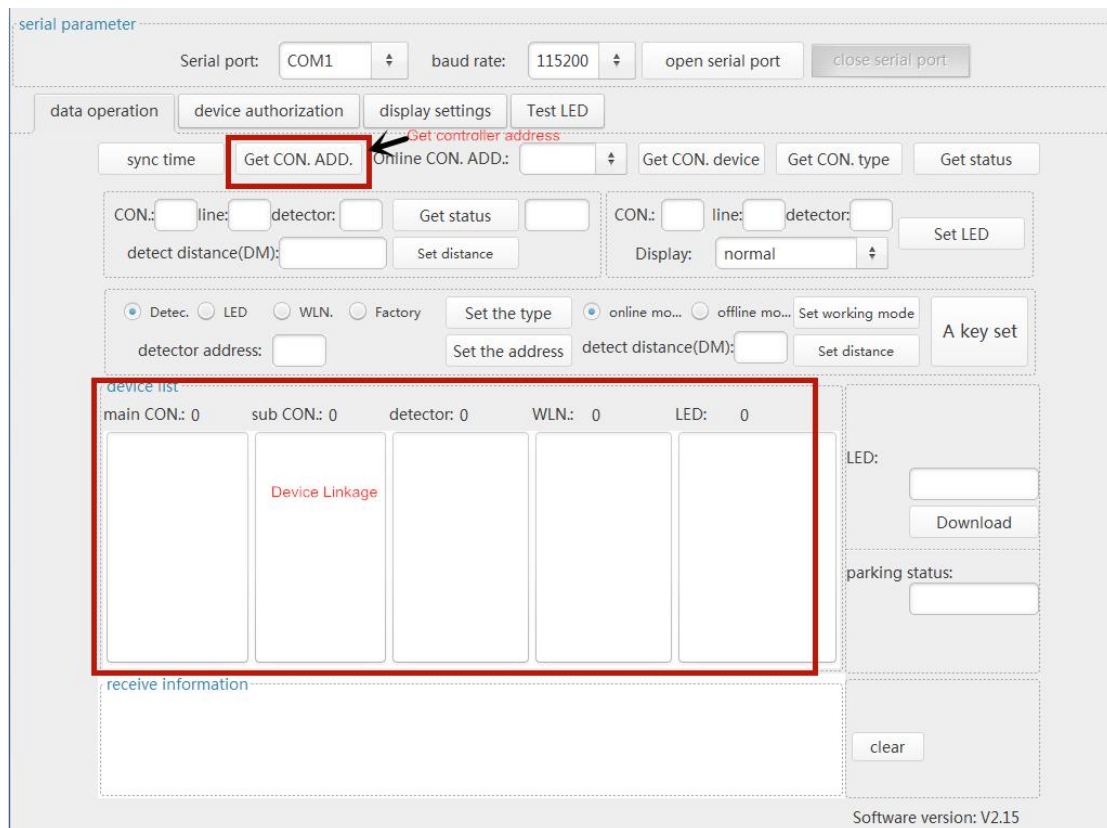
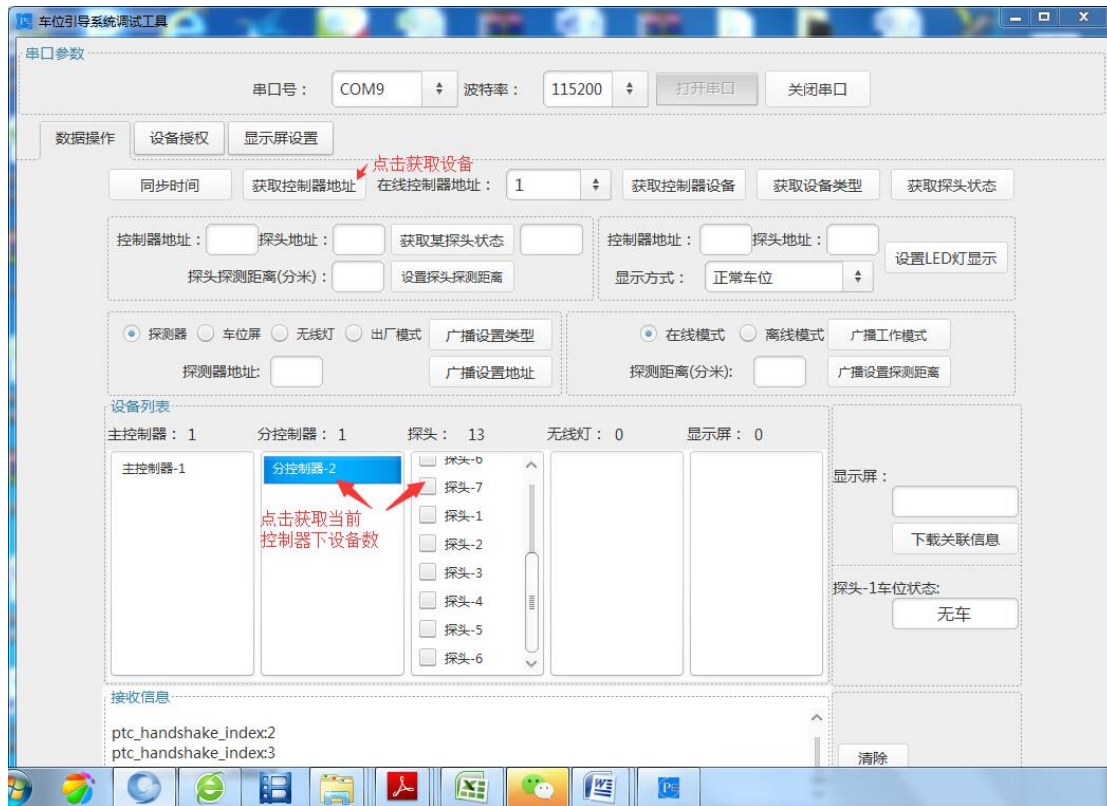


二： Controller and Detect sensor and Display Screen Set Up

4.Double click PGSTOOI_en



5.Controller set up



6.Display Screen Set up



串口参数

串口号: [] 波特率: 9600 打开串口 关闭串口

数据操作 设备授权 显示屏设置

选择显示版线路接口

线路接口: 0# 屏幕数量: 1

显示屏设置

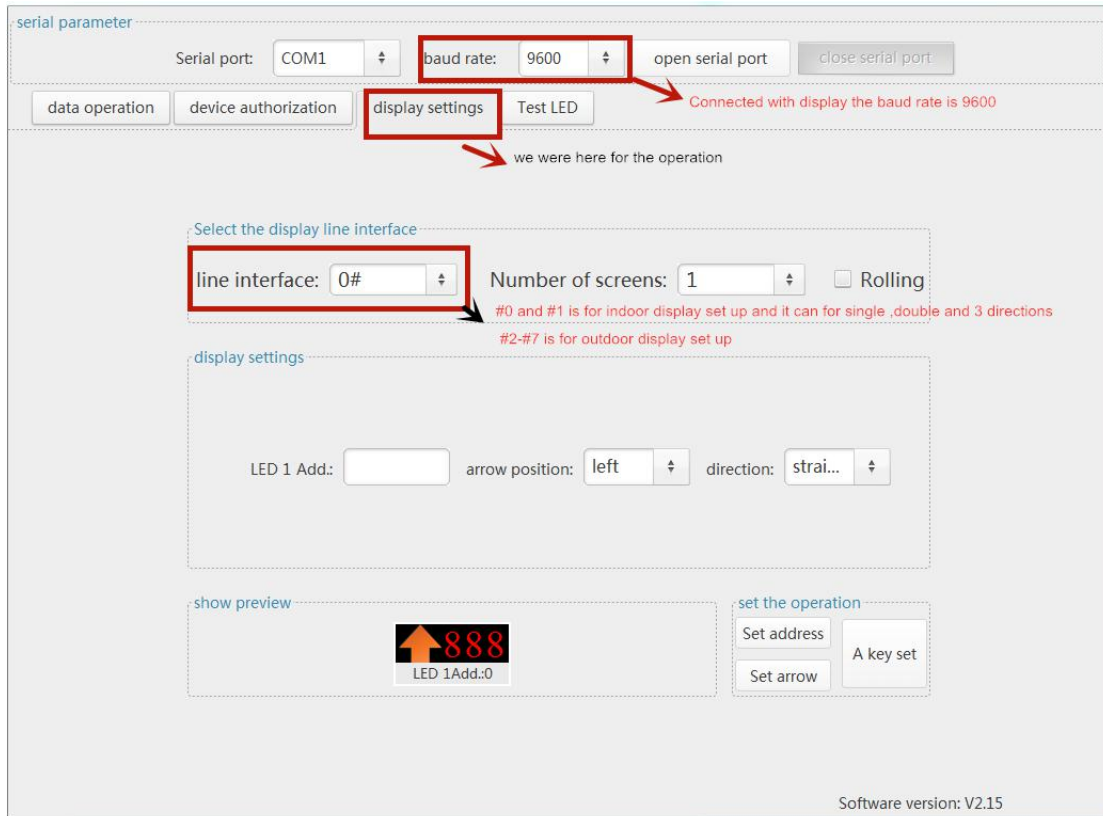
一屏地址: [] 箭头位置: 左 箭头方向: 直行

显示预览

设置操作

设置地址 设置箭头

软件版本: V2.03



serial parameter

Serial port: COM1 baud rate: 9600 open serial port close serial port

data operation device authorization display settings Test LED

Select the display line interface

line interface: 0# Number of screens: 1 Rolling

display settings

LED 1 Add: [] arrow position: left direction: strai...

show preview

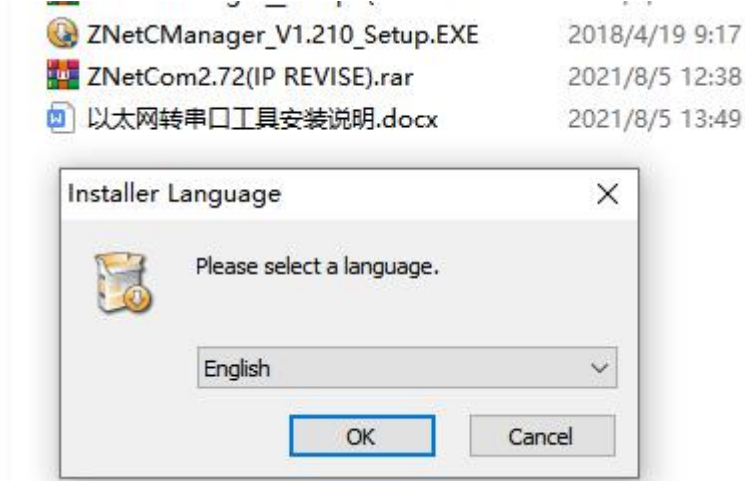
set the operation

Set address Set arrow A key set

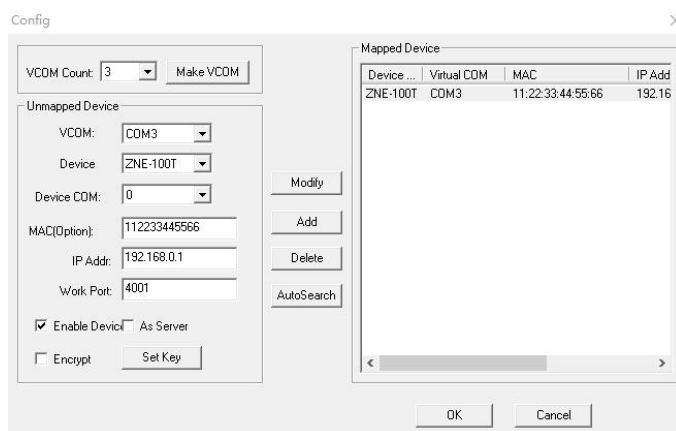
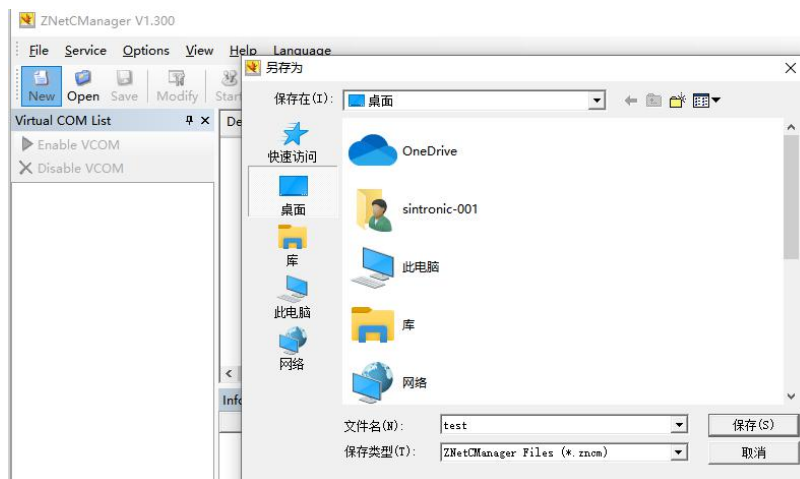
Software version: V2.15

三： Main Controller Board Serial Port To Tcp Connection

1. Click znetCManager_V1.210_Setup.EXE

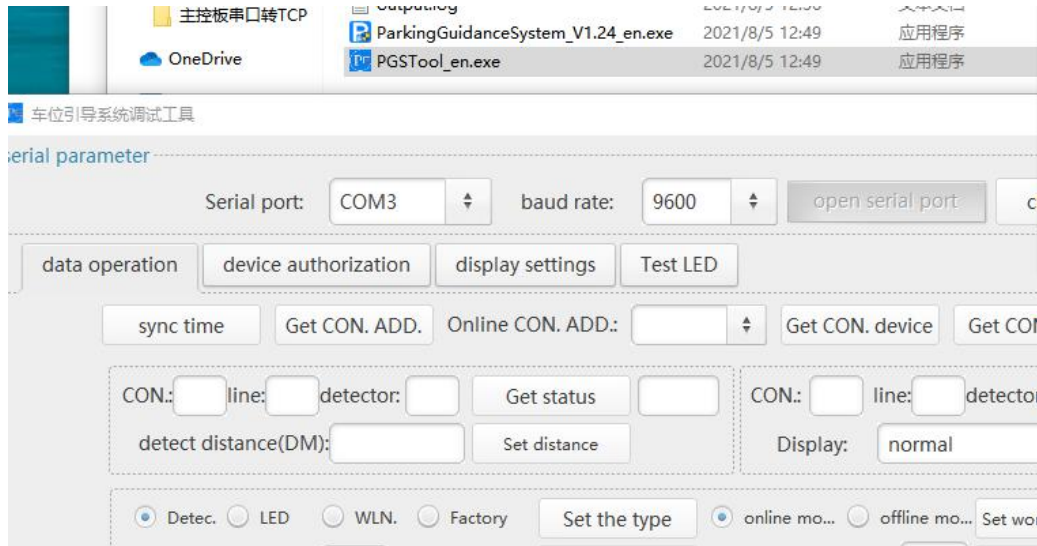


2. Click NEW to build a new virtual com port to communicate with tcp port and then save the file to the desk as next time you can open the port directly instead of building a new one

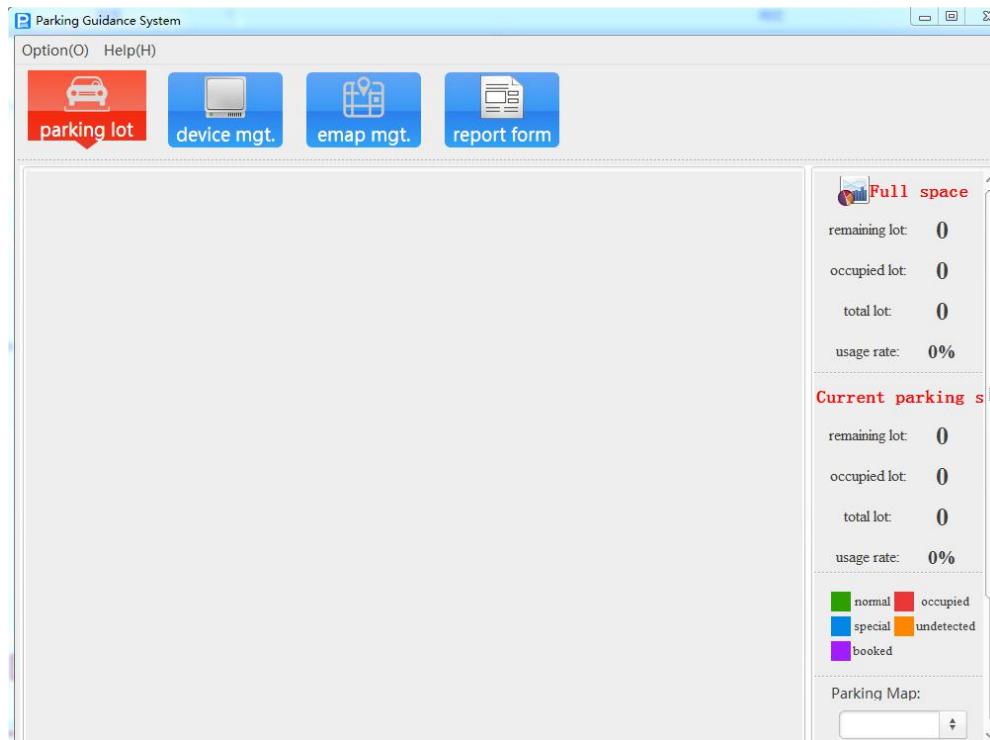


Pls noted the main controller rj45 port must be connected to the pc during the set up

3. Finally double click PGSTOOL_EN.EXE and choose the build up com port and choose baud rate to 9600 (this is for controller parameter)



四： Function Descriptions

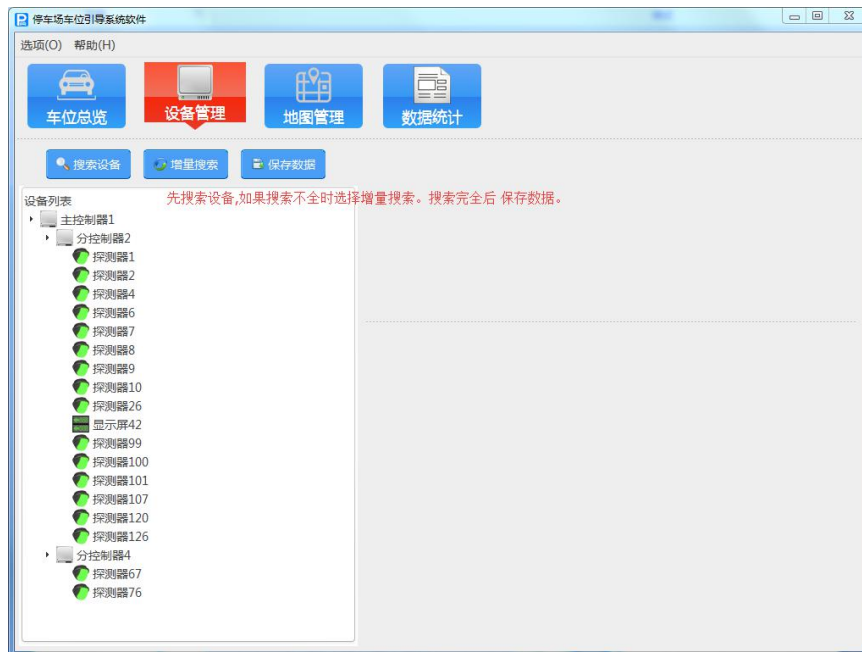


This software is mainly used for hardware configuration of parking lot guidance, area planning, and real-time display of parking lot status. After the configuration is completed through this software, the parking guidance system can be used offline (except for the reservation function)

The corresponding function buttons are displayed on the top of the interface: parking space overview, equipment management, map management, data statistics, the left side displays the corresponding electronic map, and the right side displays related information such as data analysis.

Equipment management

Click "Device Management" to enter the device management interface, as shown in the figure below
Search for devices first: A tree-shaped device list will be displayed on the left of the search. If the device search is not complete, click incremental search. The search is completed and the data is saved.



Map management:

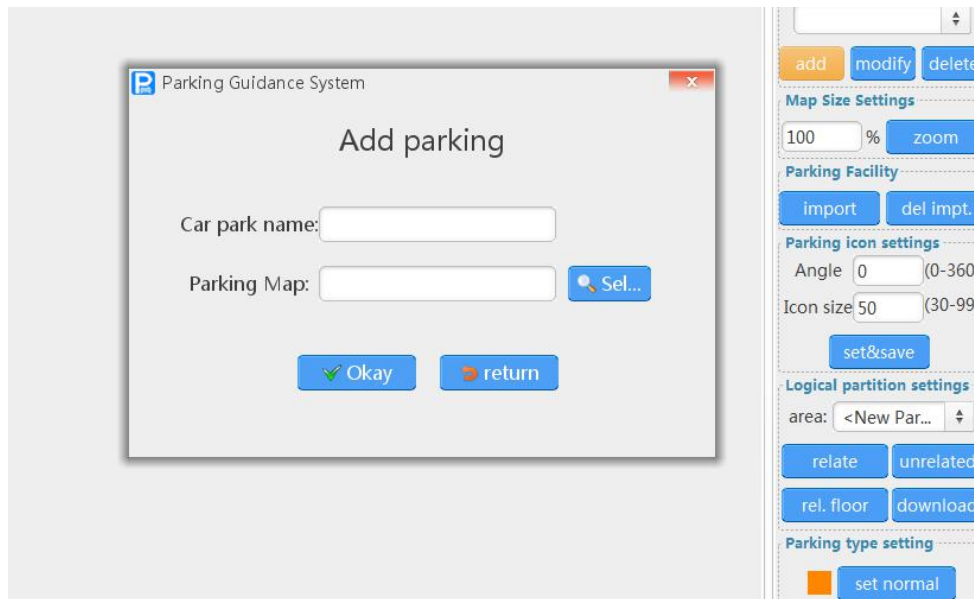
Add electronic map to name the map name

Map zoom: adjust the map to fit the size

Import device: Import the device that has been saved before. One-click import or selective import of some devices

The device import port is displayed in the upper left corner of the software, hold down the left mouse button and drag the icon to the corresponding position

Parking space icon settings: Imported device icons can be selectively adjusted in size and angle



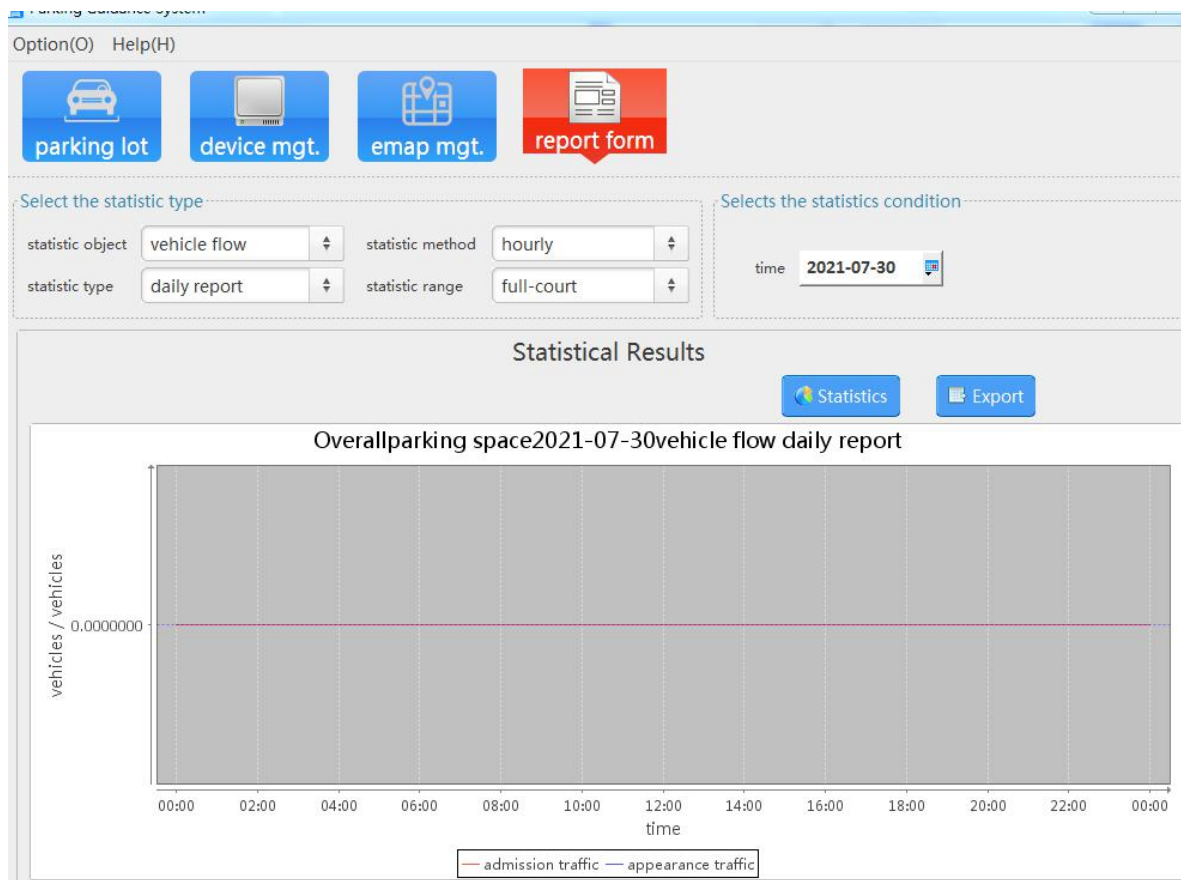
Report Form:

Operation and maintenance analysis

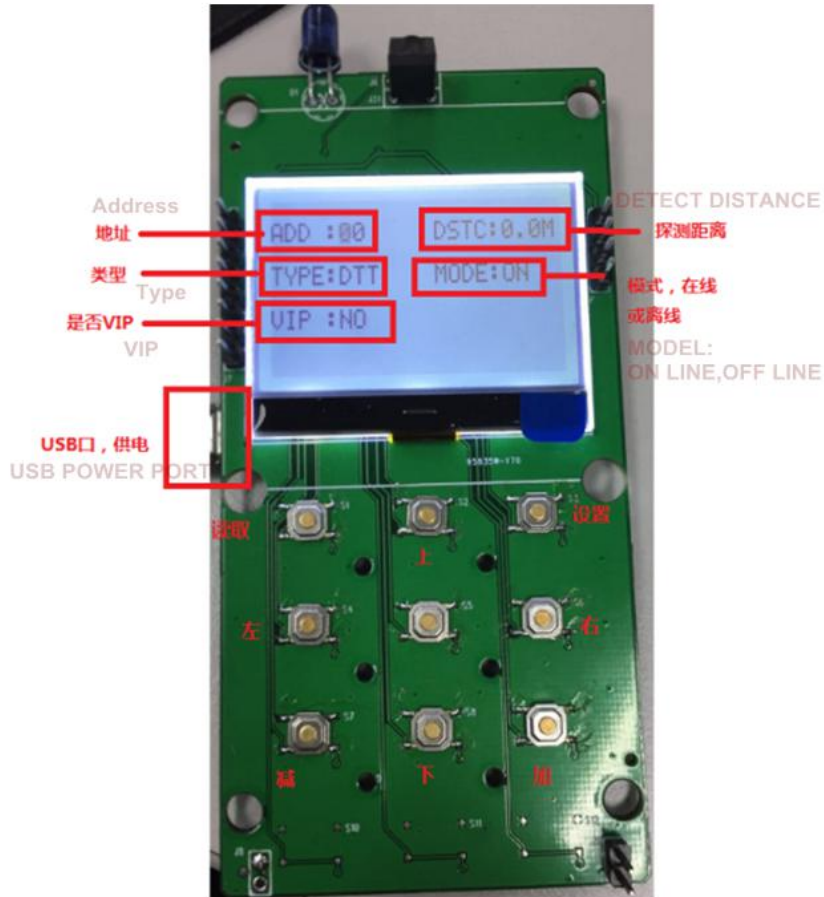
Click "Operation and Maintenance Analysis" to enter the operation and maintenance analysis interface.

Here provides statistics on "Park Flow Statistics", "Park Space Utilization Rates", and "Parking Space Utilization Rates". After selecting the start time and end time, click "Query" to generate

the corresponding operation and maintenance analysis.



Part.2 Remote Controller Set Up



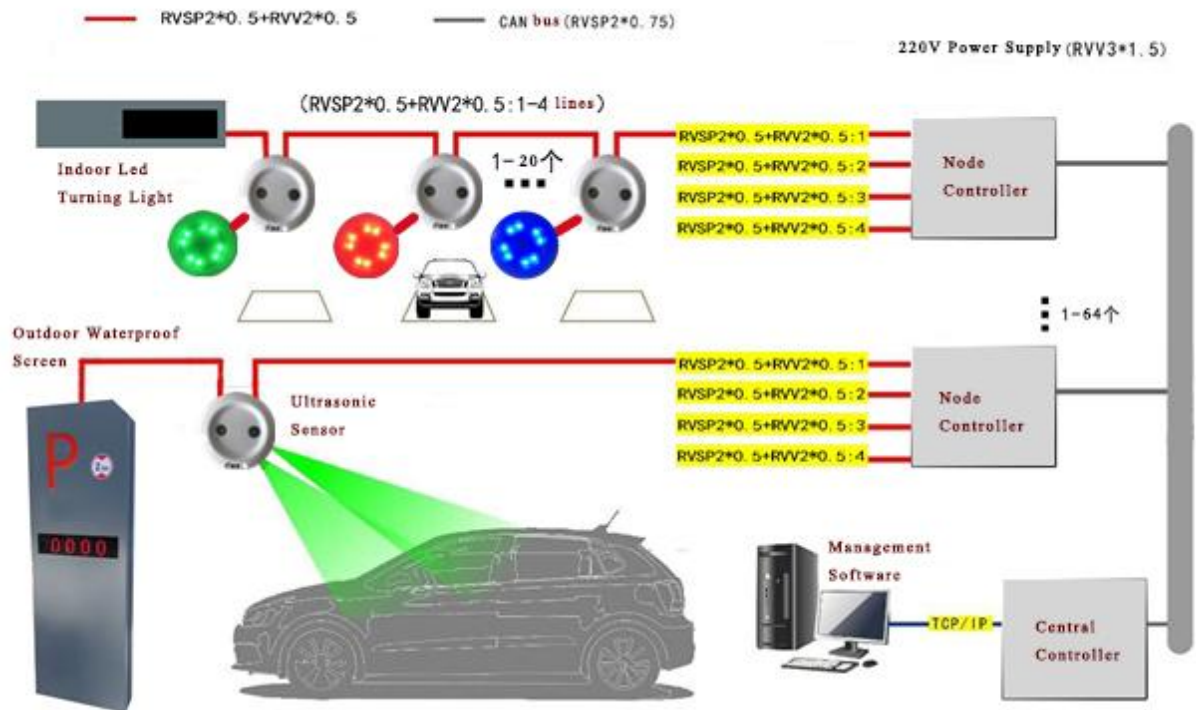
The parameters that can be set are displayed on the screen:

1. Address: Set the address code
2. Detection distance: 0-6M can be set
3. Equipment type: can be set to probe (DTT), screen (screen), wireless light (light) (not used temporarily) factory test mode (farty)
4. Working mode: offline (off) or online mode (on). In online mode, if there is no RS485 connection within one second, the LED will flash. Offline mode does not flash
5. Display type: Normal mode (red and green display), whether it is VIP (red and blue display), and appointment mode (red and yellow display). Up, down, left, and right are used to select which parameter to set, and the cursor will flash on the currently set value. The plus and minus keys change the parameter value. The read key can read the current information of the device. After setting the parameters on the screen, click the setting button to set the corresponding parameters of the device.

Instructions:

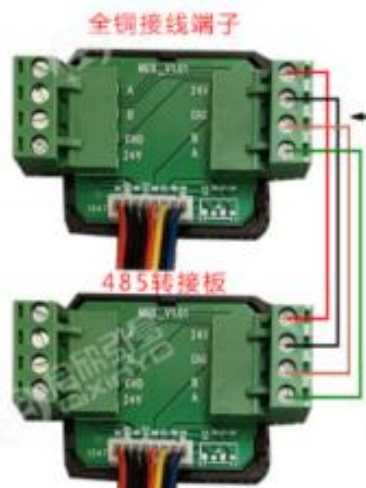
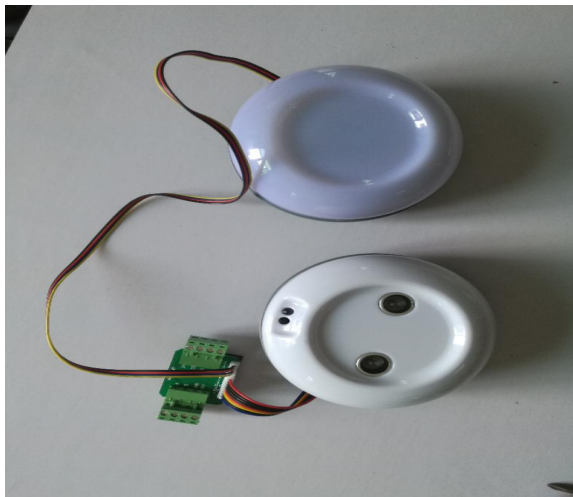
1. The initialization is completed in about 1 second after power-on, and the above data is displayed on the screen.
2. Press the read key to read the current device value (this step can be skipped)
3. Use up, down, left and right to select the parameter to be modified, press plus and minus to modify it to the required value
4. After modification, press the set button to complete the modification. If the device receives the modification information and the modification is successful, there will be a blue flash.

Part.3 Wiring Diagram



Noted:Node controller connect to nod controller and to main controller is by rs485 can cable

1. Detector wiring

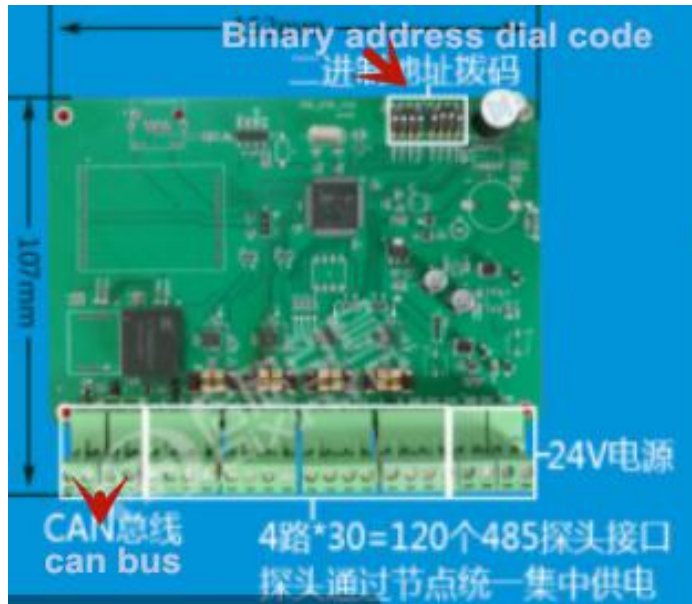


Detector is connected by rs485 board which is B-B,A-A in the signal board

2. Node controller Wiring

Each Node controller have 4 units of can port which each can connect 4 lines of detector with each line can support better 20 units detector

So each node controller can support 80-100 detectors

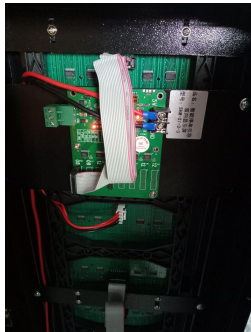


Noted: each node controller need to set up the binary address so that the node controller can be to do the related operation in the software

3. Display Wiring

The display screen can be connected to the nearest detector by usb 485 board and can be set up the linkage to the any line of the detectors

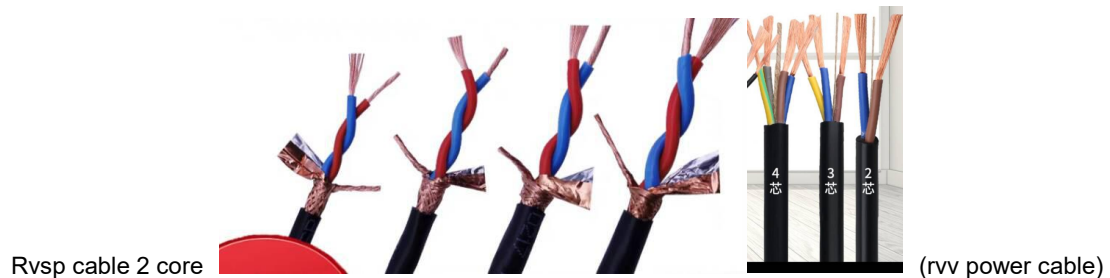
Noted:the display screen must be given an Address by set up in the software



4. Cables

A:For :controller to sensor , sensor to sensor, led screen to sensor connection pls use 2 kind of cable which is 2 chip 485 cable rvsp 2 chip 0.5 and rvv cable 0.5

1 unit of 2 chip rvsp(for rs485 communication) cable and we advise the chip is 0.5 +1 unit of 2chip rvv cable(for power)



Rvsp cable 2 core

(rvv power cable)

B: For nod controller to main controller please use rvsp 2 chip 1.0 for 483 port A&B connection and use rvv cable 1.0 for power port ,24v and gnd connection



(rvsp 2chip cable 1.0 diameter)



(rvv cable 1.0)